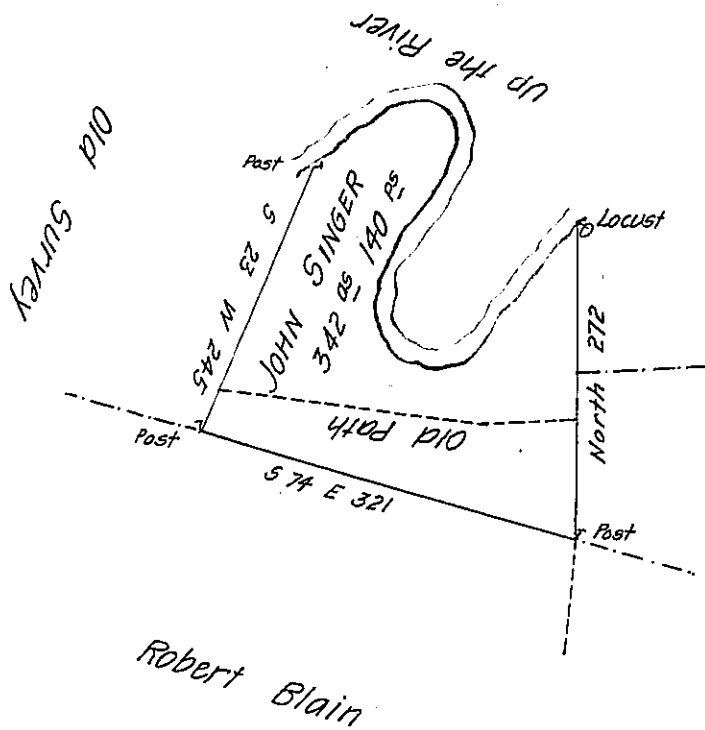


Courses & Distances up the River are as follow

- S 41 W 75
- S 38 W 69
- S 79 W 36
- N 59 W 38
- N 29 W 44
- N 19 E 29
- N 46 E 73
- N 27 E 21
- N 14 E 22
- North 18
- N 21 W 14
- N 50 W 14
- S 87 W 16
- S 58 W 85



Wm McPherson
John Barclay

Situate on the South Side of the West Branch of Susquehanna River about half a mile below the Mouth of Clearfield Creek Huntington County Franks-town Township containing 34^{AS} 140^{PS} and the usual allowance for Roads. Sur-veyed the 22nd day of October 1794 for John Singer in pursuance of a warrant dated the 24th day of December 1792

John Canan—

Daniel Brodhead Esq^r

S. G.

IN TESTIMONY that the above is a copy of the original remaining on file in the Department of Internal Affairs of Pennsylvania, made conformably to an Act of Assembly approved the 16th day of February 1833, I have hereunto set my hand and caused the Seal of said Department to be affixed at Harrisburg, this fifth day of April 1907

Isaac B. Brown
Secretary of Internal Affairs.